

Citizen Redistricting Committee
New Mexico Bar Association Center
5121 Masthead St. NE 2nd Floor
Albuquerque, NM 87109



Hon. Edward L. Chávez, Chair
Ryan Cangioli
Hon. Lisa Curtis
Robert Rhatigan
Joaquin Sanchez
Hon. Michael Sanchez
Christopher Saucedo

CITIZEN REDISTRICTING COMMITTEE

Meeting Minutes of August 14, 2021 | 1:00PM-5:00PM
Indian Pueblo Cultural Center
Albuquerque, NM
[View Recording Here](#)

[SUBJECT TO RATIFICATION BY COMMITTEE]

CALL TO ORDER AND ROLL CALL

The meeting was called to order by Chair Chávez. The roll was called; the following Committee Members were present. The Chair and Members introduced visiting officials present. The chair and members briefly gave biographies and appointments upon affirming that they were present.

HON. EDWARD L. CHÁVEZ, CHAIR
RYAN CANGIOLOSI, MEMBER present
HON. LISA CURTIS, MEMBER present
ROBERT RHATIGAN, MEMBER present
JOAQUIN SANCHEZ, MEMBER present
HON. MICHAEL SANCHEZ, MEMBER present
CHRISTOPHER SAUCEDO, MEMBER present

1. APPROVAL OF AGENDA

Chair Chávez sought a motion to approve the agenda as amended by the Chair (amended to remove approval of the August 12 meeting minutes which were not yet ready for approval). Committee Member Michael Sanchez moved to approve the agenda; Committee Member Curtis seconded. Hearing no discussion, Chair Chávez conducted a vote. All Committee Members voted in the affirmative, and the agenda was approved unanimously as amended.

2. OPENING REMARKS ON CRC'S WORK AND MISSION

Chair Chávez made comments on the Committee's work and direction.

3. WELCOMING REMARKS

Governor of Acoma gave welcoming remarks on behalf of Wilfred Herrera, Jr., Chairman of the All Pueblo Council of Governors representing 20 Pueblos of Governors in New Mexico and Texas. Spoke of the challenges of colonialism, genocide, and efforts at forced cultural assimilation citing as one example the federal boarding schools dating 1890 to 1960. They are stewards of spiritual lands including Chaco, Mt. Taylor, Sandia, and Jemez Mountains, along with other spiritual lands that they will want to be considered in redistricting. They want self-determination. (00:27:50)

4. THE HISTORY OF REDISTRICTING, VOTING RIGHTS AND THE SOVEREIGN NATIONS OF NEW MEXICO (*Casey Douma, Esq., Laguna Pueblo*)

Casey Douma, from Pueblo of Laguna, made a presentation regarding the history of redistricting with specifics about the Voting rights of Native Americans and the Sovereign Nations of New Mexico. Co-Chair of APCG redistricting task force. Recounted the history of disenfranchisement of the Native population. Mr. Douma urged the CRC to adopt maps that will be drawn by the Nations and Tribes because the maps will have gone through an extensive process with compromise and they know what is best for their people. (Presentation on Resources page of www.nmredistricting.org) (00:35:10)

5. REDISTRICTING 101

Mr. Michael Sharp, of Research & Polling ("R&P"), gave a brief presentation on criteria the Committee must consider in its examination of maps (*R&P slide presentation and meeting video on website*).

6. COMMENTS FROM THE COMMUNITY

- **Regis Pecos (1:27:11).** Spoke of communities of interest. Urged the CRC to have open minds and open hearts and to listen patiently to the presentations and the contributions of the Tribes to the redistricting process.
- **Teren Villa (1:57:00).** Need to preserve the Chaco region which contributes to world history. Opposes oil and gas development there. Also need to be mindful of Mt. Taylor and Sandia Mountains even if beyond their district boundaries. Concerns are infrastructure, language, education, housing, and water.
- **Arden Kucate Councilman from Zuni (2:28:41).** In 2011 Zuni sought to be included in CD 2&3, in SD4 and SD30 and in HD6 based on ancestral lands and their communities of interest which extend beyond the Zuni boundaries and even into neighboring states. Oppose the Arizona Salt River project. Urges the CRC to respect their right of self-determination.
- **Governor Martin Kowemy from Laguna Pueblo (2:35:15)** Wants the CRC to create as many Native American majority minority districts as possible. Laguna exists in Cibola, Valencia, Sandoval, and Bernalillo counties. Zuni has connections with lands beyond their boundaries, i.e., Mt. Taylor, Chaco Canyon, Zuni Mountains, Magdalena Mountains, Rio San Jose River, Rio Puerco river, and other areas beyond their borders, all of which they consider to be sacred lands. Urges the CRC to honor their decision regarding redistricting because it will be based on consensus and consistent with the VRA and redistricting principles.
- **President Edward Velarde (2:42:45)** of Jicarilla Apache Nation. They are pleased with Representative Lente and Senator Schendo.
- **Brian Vallo (2:47:20)** Governor of Acoma reiterates the importance of land to the Tribes. Urges CRC to reach out to their experts to understand their thought process if we still have questions about their approach. Wants more balance and equity.
- **Senator Benny Schendo (2:53:04).** Senate District 22. Maintenance of Towa language, which is a unique language, is as important as their historical connection to sacred places like the Pecos area. Self-determination is important. He has a large district but enjoys representing its people.

- **Representative Georgene Louis (3:02:40).** Represents HD26 westside of Albuquerque and Acoma. Native Americans make up 10% of population but not reflected in the legislature. Her district includes about 4% Native American but the majority are Hispanic which have similar concerns as the Native American population in her district.
- **Representative Patricia Roybal-Caballero (3:10).** Represents HD13 a majority minority district which is continually growing. The district has the highest foreclosure rate. Concerned about immigrants not being counted. Encourages “social consciousness” in CRC work.
- **Amber Carrillo (3:50:35)** APCG mission is to promote social, cultural, and traditional wellbeing of Pueblos. IPCC is on Isleta and Sandia lands. Works with the Ad Hoc Redistricting Committee. Members are Keegan King, Casey Douma, Pamela Moody, Alicia Suazo, Regis Pecos, Conroy Chino, Lora Weahke, Jake, Austin Weahkee, Ahzta Chavez, Joe Little, Charlotte Little, James Pojuiva, Concerned with undercounting of the Native American population.
- **Austin Weahkee (4:08:22)** works with NAVA. Reiterates problems with census count. Native Americans are 10% of population so should have seven house members and three senators. Need to be careful not to disrupt HD65 and HD69. Communities are starting to understand the power of the vote. Urges CRC to give deference to the Ad Hoc committee.
- **Keegan King (4:19:55)** is with the Ad Hoc Redistricting Committee and urges CRC to adopt whatever their committee recommends because it would have been thoroughly vetted with considerable efforts at coordination and compromise. Goal remains to keep the six house districts and three senate districts.
- **Ricardo Caballero (4:37:30)** wants the CRC to look at populations under 5 years or within 5 years. Also immigrant communities undercounted and because of immigrant communities who cannot vote need to have majority minority Hispanic districts that are much larger than 50%
- **Ahtza Chavez (4:43)** Dine/Tewa. Self-determination is the highest priority. There was a drop in voter participation due to closed polling places during primaries, however, voter participation increased for the general election. Expects maps in 2 to 3 weeks from Native American communities.
- **Mason Graham (4:49:40)** Black Voters Collaborative. Believes the African American community has historically been undercounted which negatively impacts communities of color. Urges CRC to consider other data or conduct an independent review of population counts in communities of color.
- **Eileen Schendo (4:54:55)** from Cochiti/Jemez. CRC should be in communities getting input, concerned that tribal men are making most of the decisions. CRC should consider the state, shared interests and approach should be global.
- **Cathryn McGill (5:08:20)** with Black Voters Collaborative. Working to bring coalitions together to better participate in the process. CRC could assist with resources so that they can get us the information we need to make decisions that affect the black community.

- **Julie Radosevich (5:11:40)** Submitted a Congressional map online. South Valley connects more with Los Lunas, Vegita and Belen than with Tanoan. South Valley should be moved to CD2. South Valley has farming, language and connections to Mexico that define its interests. Spoke about immigrant population in the South Valley, many of which are DACA students. South of I-40 should be the boundary of the South Valley. See HD16 and SD26. Also has prepared maps for HD16 and SD26. (Maps attached to minutes as "Attachment 1")
- **Huang Nguyen (5:17:45)** with Asian Family Center. CRC must also consider the refugee and Asian immigrant community. Do not split the International District.
- **Sonlatsa Sunshine (5:24:28).** Member of Navajo Nation in McKinley County. Is a voter registrar and voter educator. Thankful for this forum. Native Americans have been undercounted. There is a huge distrust in the census system or that anything will be done to repair the problems with the census. Encourages leadership to file a lawsuit to correct the census problems, for example, accessibility. Also concerned about lack of education regarding redistricting.
- **Sheridan Lund (5:31:20)** Submitted a map for Congressional districts. Tried to keep CD1 with some rural communities, moved CD3 up on the east side, and move CD2 lower on the west side.
- **Pat Woods (5:33:00).** Senator District 7. He has nine school districts, 3 cities with different communities. His district goes from Texico to Des Moines. Believes they received an accurate count and it shows a drop of 3%. Problem is all the money that is being pumped into New Mexico which will at some time end.

7. Receipt of Public Submissions

There were no new map and no map-drawing work was performed.

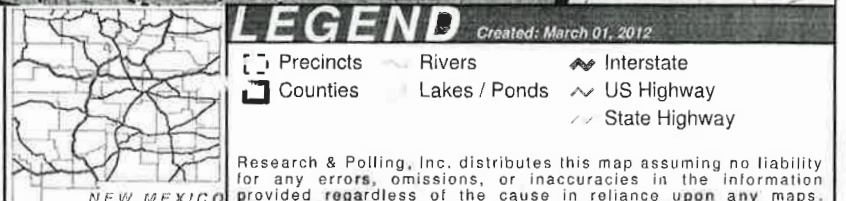
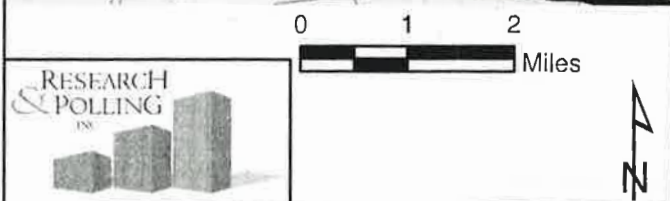
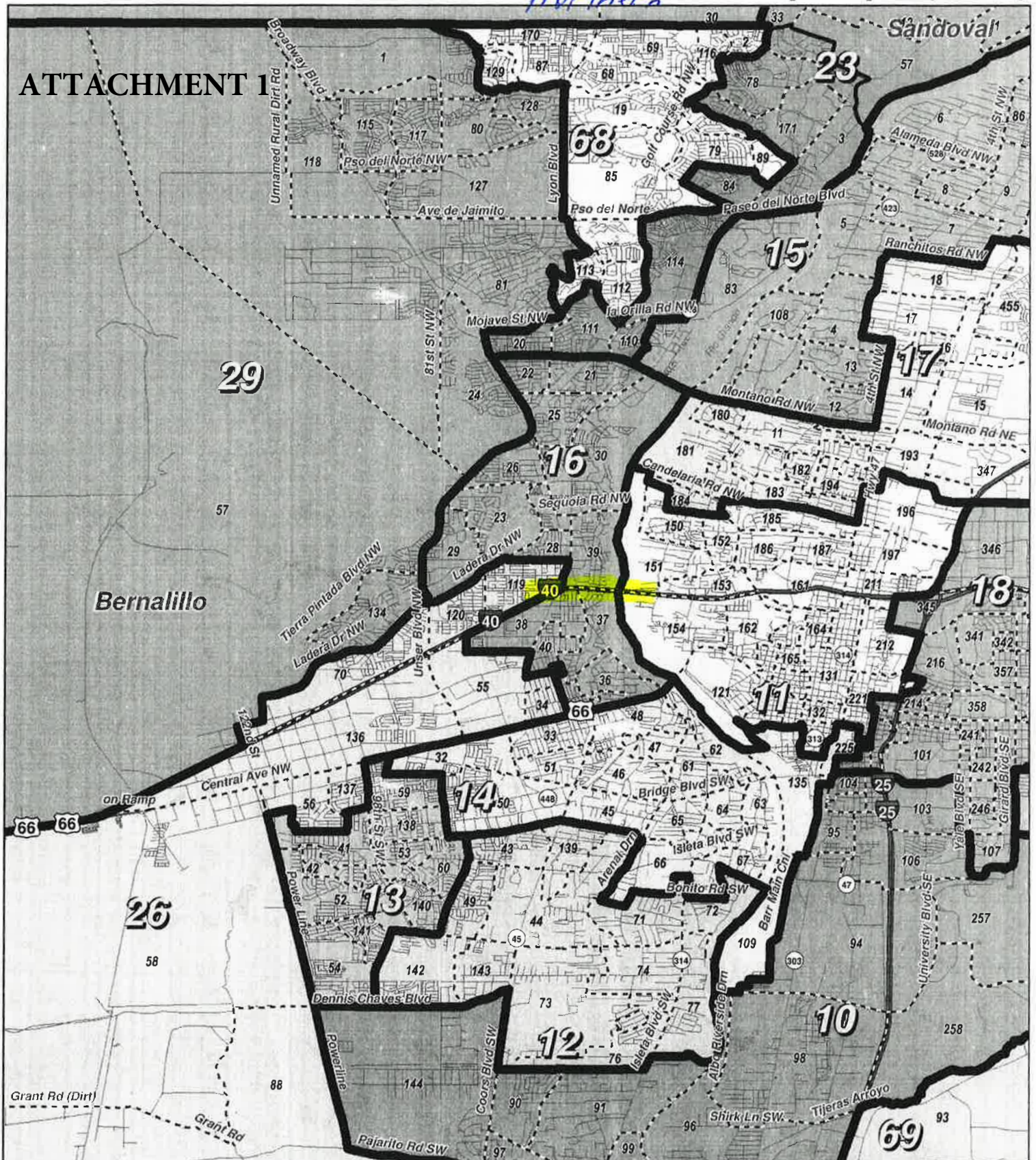
- Review of any submissions over portal since last meeting
 - a. *No new maps.*
- Receipt of public submission of maps and testimony relating to communities of interest, Congress, state Senate, state House, and the Public Education Commission.
 - a. *No new maps.*
- Instructions to Research & Polling
 - a. *No new instructions.*

8. ADJOURNMENT.

Chair Chávez sought a motion to adjourn. Committee Member Michael Sanchez moved to adjourn; Committee Member Christopher Saucedo seconded. Hearing no discussion ChairChávez conducted a vote. All Committee Members voted in the affirmative, and the motion was approved.

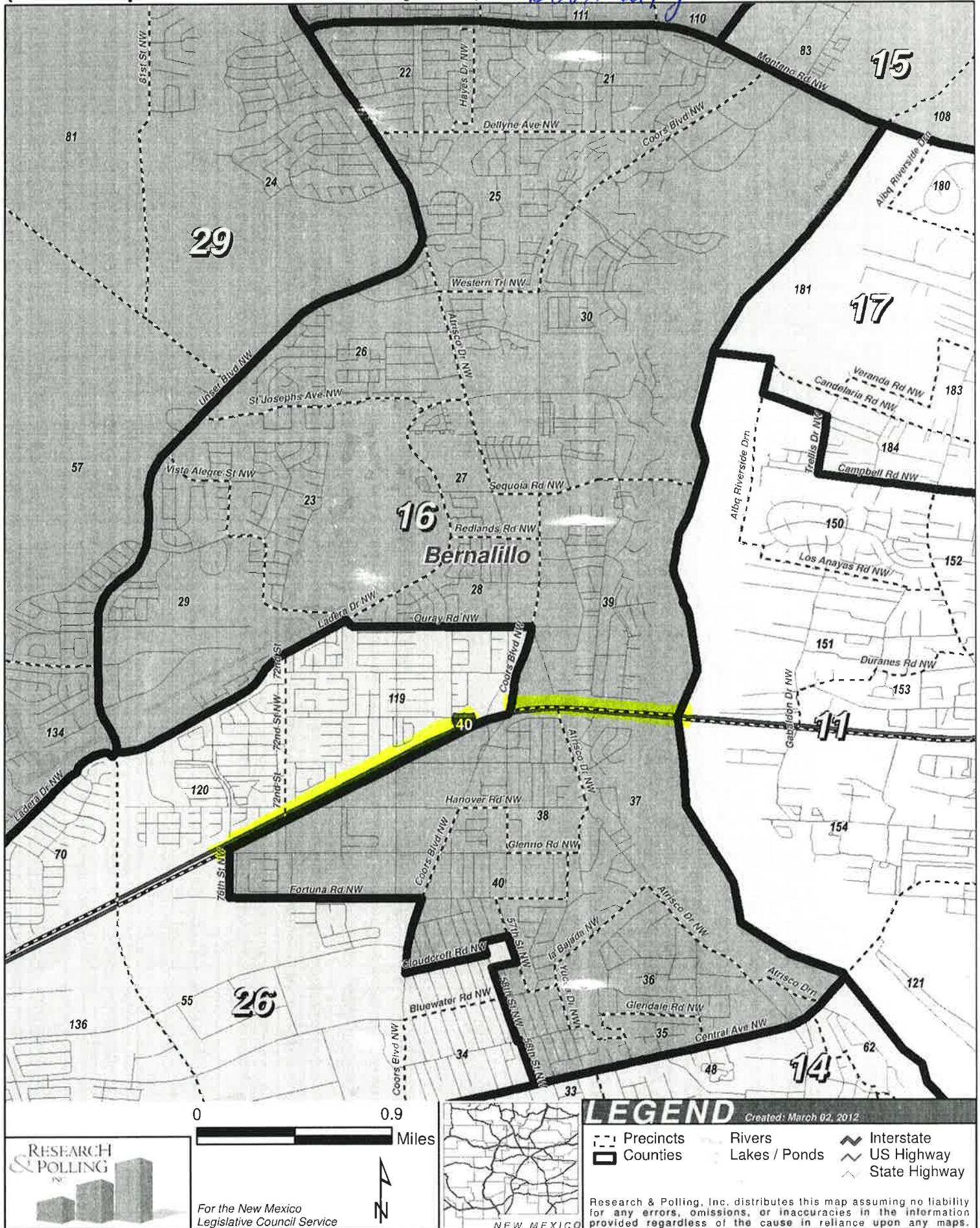
[SUBJECT TO RATIFICATION BY COMMITTEE]

ATTACHMENT 1



(Court Adopted on Remand February 2012)

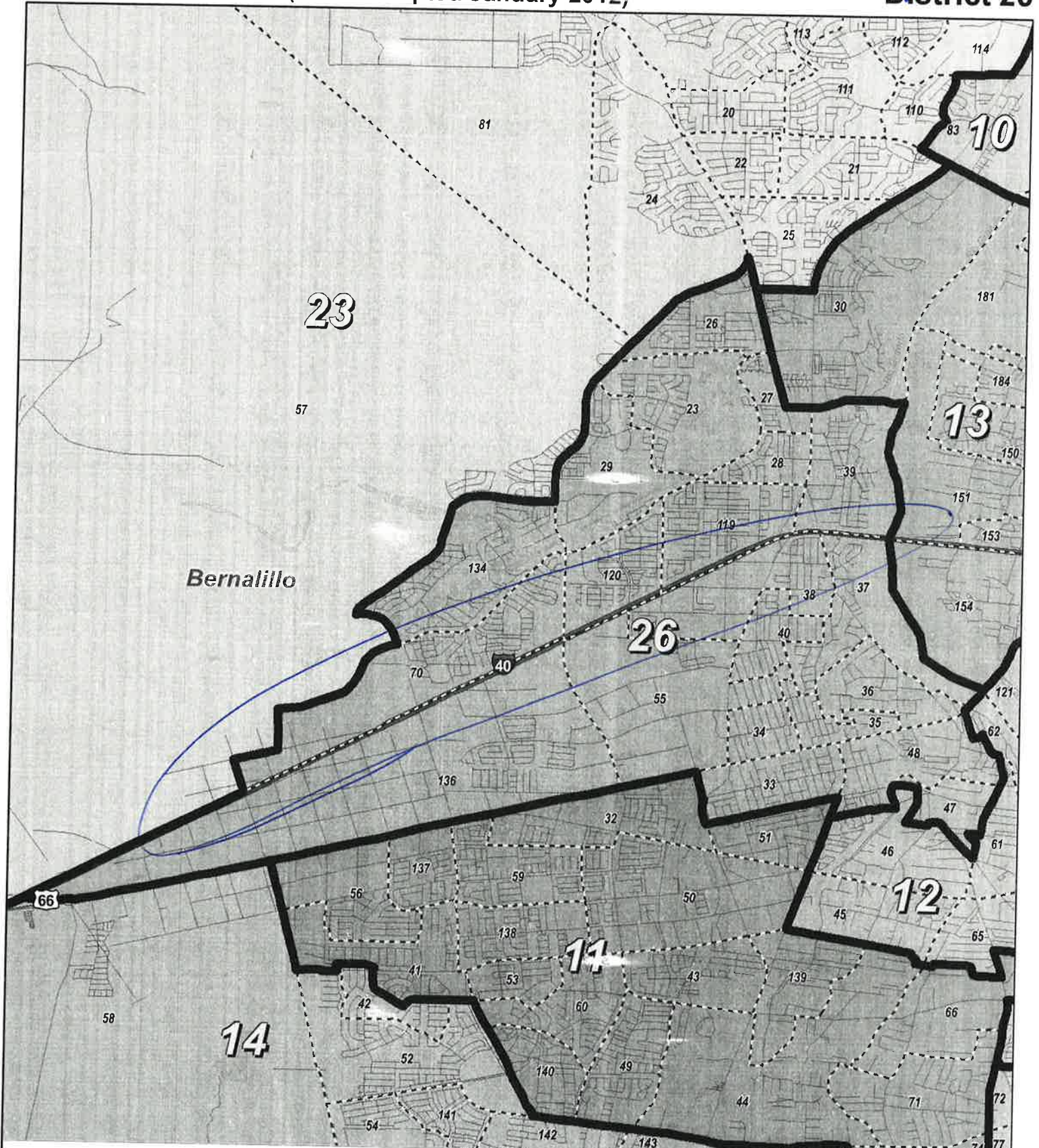
HD 16: Let L40
serve as ~~southern~~ northern
boundary



Senate: Plaintiffs, Intervenor, and Executive Defendants Joint Plan (Court Adopted January 2012)

District 26

SD 26: Let I 40 serve as northern boundary



For the New Mexico
Legislative Council Service



LEGEND

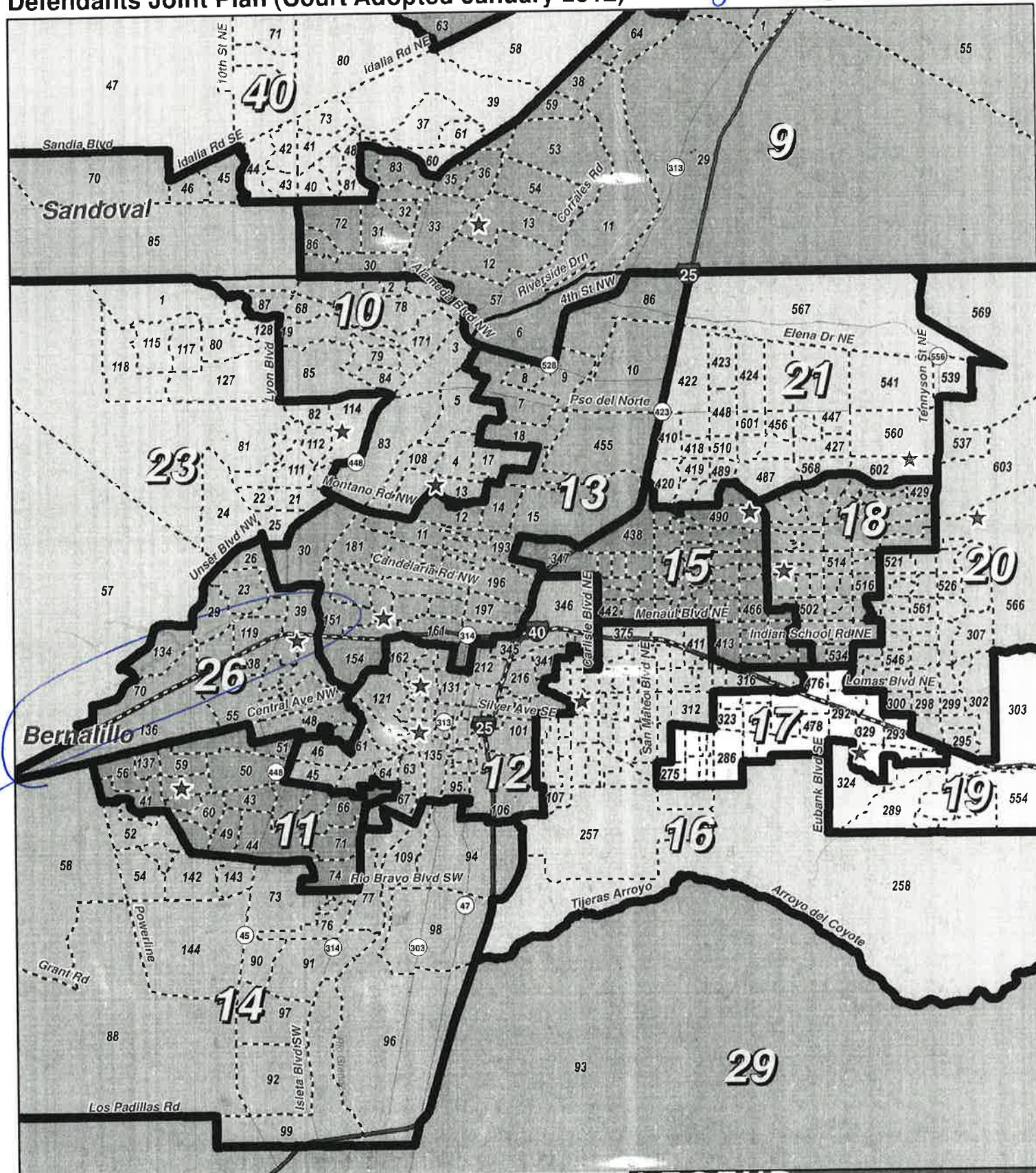
Created: January 31, 2012

- Precincts
- Counties
- Rivers
- Lakes / Ponds
- Interstate
- US Highway
- State Highway

Research & Polling, Inc. distributes this map assuming no liability for any errors, omissions, or inaccuracies in the information provided regardless of the cause in reliance upon any maps.

Senate: Plaintiffs, Intervenor, and Executive Defendants Joint Plan (Court Adopted January 2012)

SD 26: Let I 40 serve as northern boundary
Albuquerque Metro



0 1 2 3 4 Miles



For the New Mexico
 Legislative Council Service



LEGEND

Created: January 18, 2012

- ★ Legislators
- ▢ Precincts
- ▢ Counties
- Rivers
- Lakes / Ponds
- ◆ Interstate
- ~ US Highway
- ~ State Highway

Research & Polling, Inc. distributes this map assuming no liability for any errors, omissions, or inaccuracies in the information provided regardless of the cause in reliance upon any maps.